

## Vehicular Level of Service (LOS) Descriptions

### Unsignalized Intersections

### Signalized Intersections

LOS

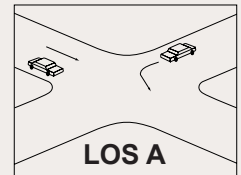
*Description*

*Description*

**A**

Minimal or no vehicular delay.

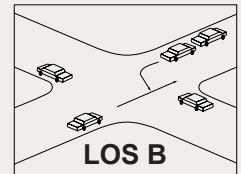
No vehicle waits longer than one signal indication.



**B**

Slight delay to vehicles.

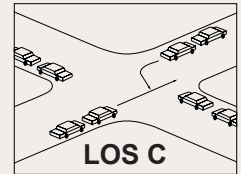
On a rare occasion vehicles wait through more than one signal indication.



**C**

Moderate vehicle delays, traffic flow remains stable.

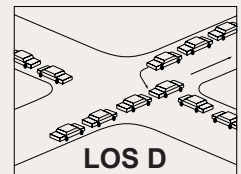
Intermittently vehicles wait through more than one signal indication, occasionally backups may develop, traffic flow still stable.



**D**

More extensive delays at intersections.

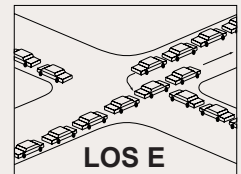
Delays at intersections may become extensive, but enough cycles with lower demand occur to permit periodic clearance, preventing excessive backups.



**E**

Long queues create lengthy delays.

Long queues create lengthy delays.



**F**

Severe delays and congestion.

Backups from locations downstream restrict or prevent movement of vehicles, creating a "gridlock" condition.

